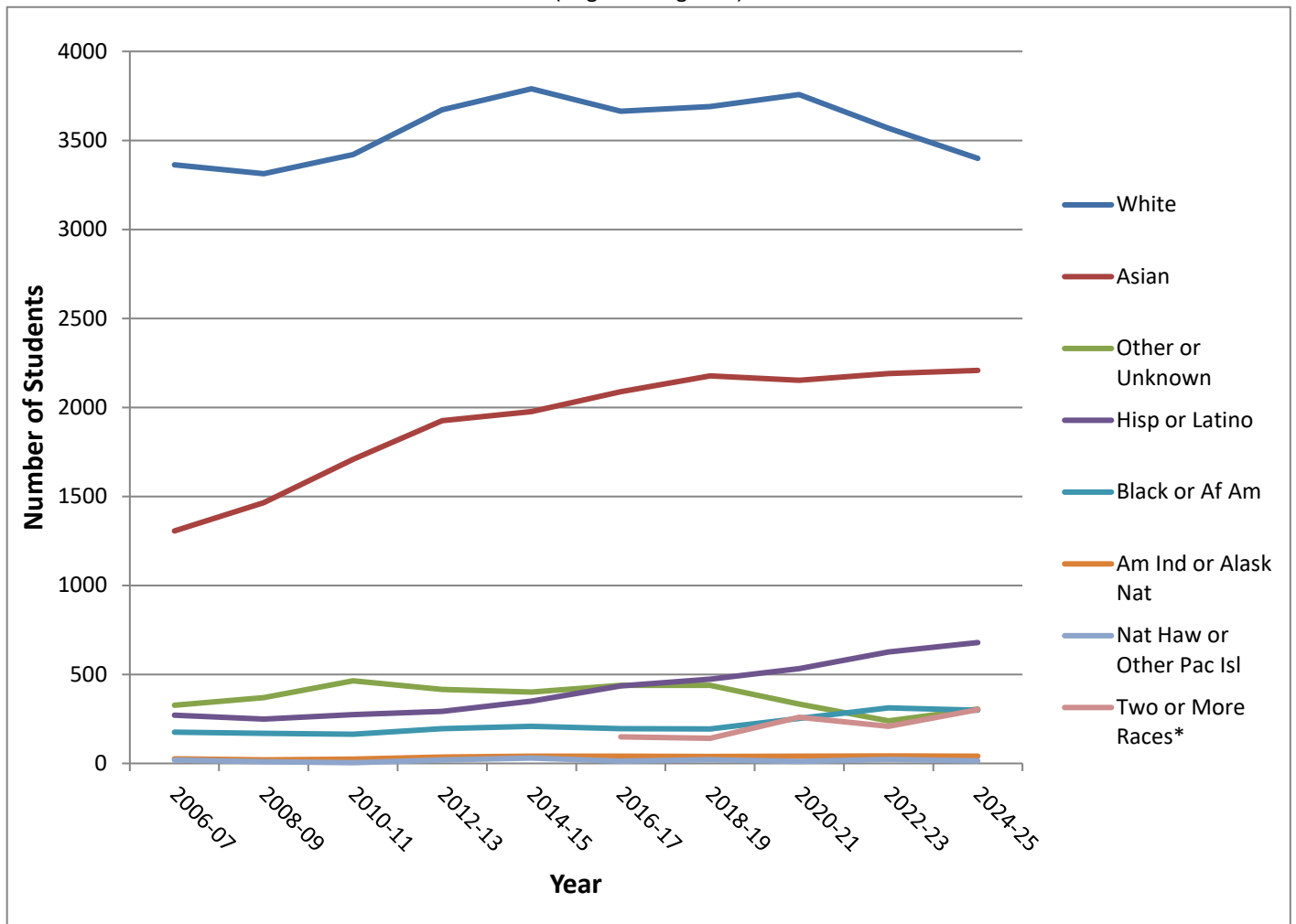


Race/Ethnicity of Full-Time Doctor of Optometry Students, 2006-2025

U.S. Schools and Colleges of Optometry

(Regular Programs)



	White	Asian	Other or Unknown	Hisp or Latino	Black or Af Am	Am Ind or Alask Nat	Nat Haw or Other Pac Isl	Two or More Races*	Total Enrollment
2006-07	3363	1306	327	271	175	26	20		5488
2008-09	3313	1465	370	249	169	20	9		5595
2010-11	3421	1708	464	274	164	25	4		6060
2012-13	3672	1925	416	292	195	35	20		6555
2014-15	3790	1976	401	350	209	41	30		6797
2016-17	3664	2088	438	436	195	41	13	149	7024
2018-19	3691	2177	438	474	194	39	21	141	7175
2020-21	3757	2152	333	532	253	41	11	260	7339
2022-23	3569	2190	239	626	312	42	22	209	7209
2024-25	3399	2208	305	679	299	41	14	302	7247

*not collected until 2015-16

April 2025

For more data on optometric education, go to <https://optometriceducation.org/data-reports/>

Association of Schools and Colleges of Optometry
www.optometriceducation.org