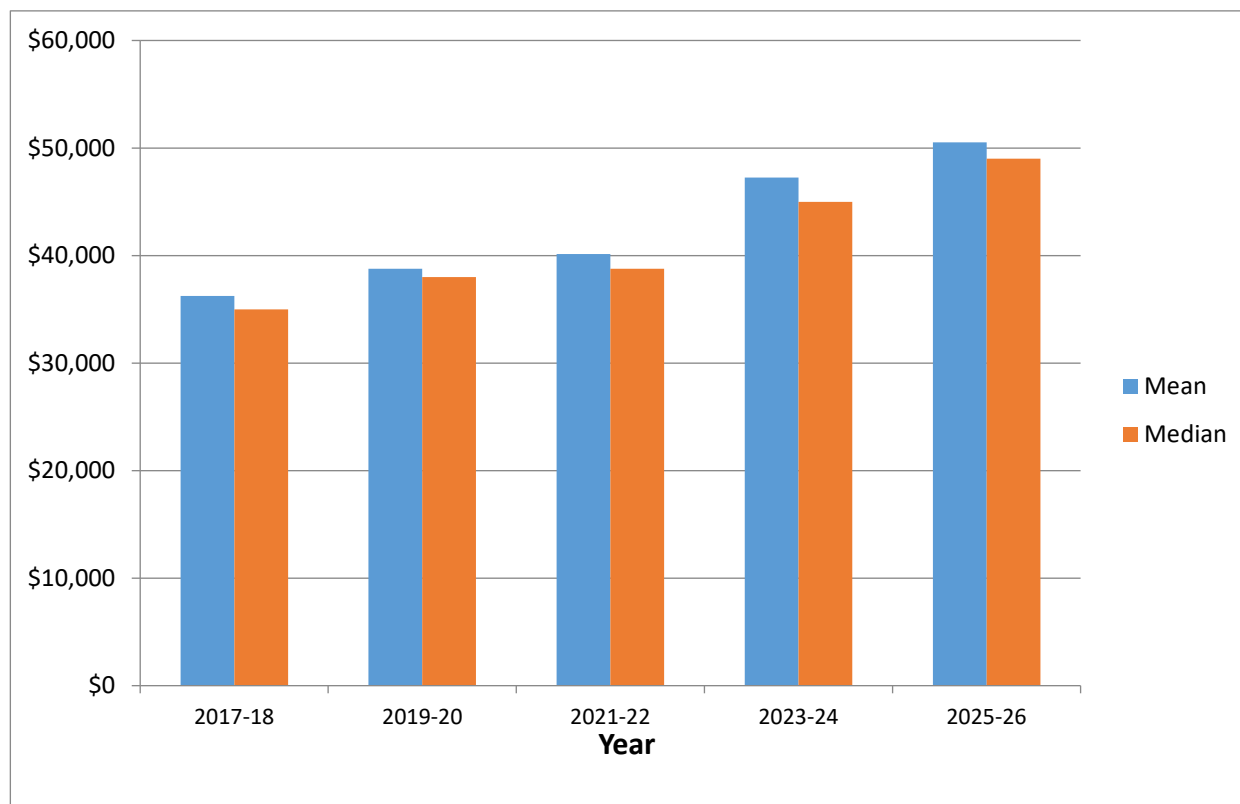


Association of Schools and Colleges of Optometry Residency Stipends (by Position)

Source: ASCO Residency Programs Directory¹

2017-2026



	Mean	Median	<u>Annual % Change (Mean)</u>
2017-18	\$36,227	\$35,000	1.1%
2019-20	\$38,760	\$38,000	2.7%
2021-22	\$40,152	\$38,774	1.2%
2023-24	\$47,265	\$45,000	14.4%
2025-26	\$50,539	\$49,000	4.2%

¹Program lengths vary. For years 2017-2022, stipend data was collected in the fall. For 2023-24 and 2025-26, stipend information was collected through January and probably reflects a greater proportion of updated stipends for the next academic year.