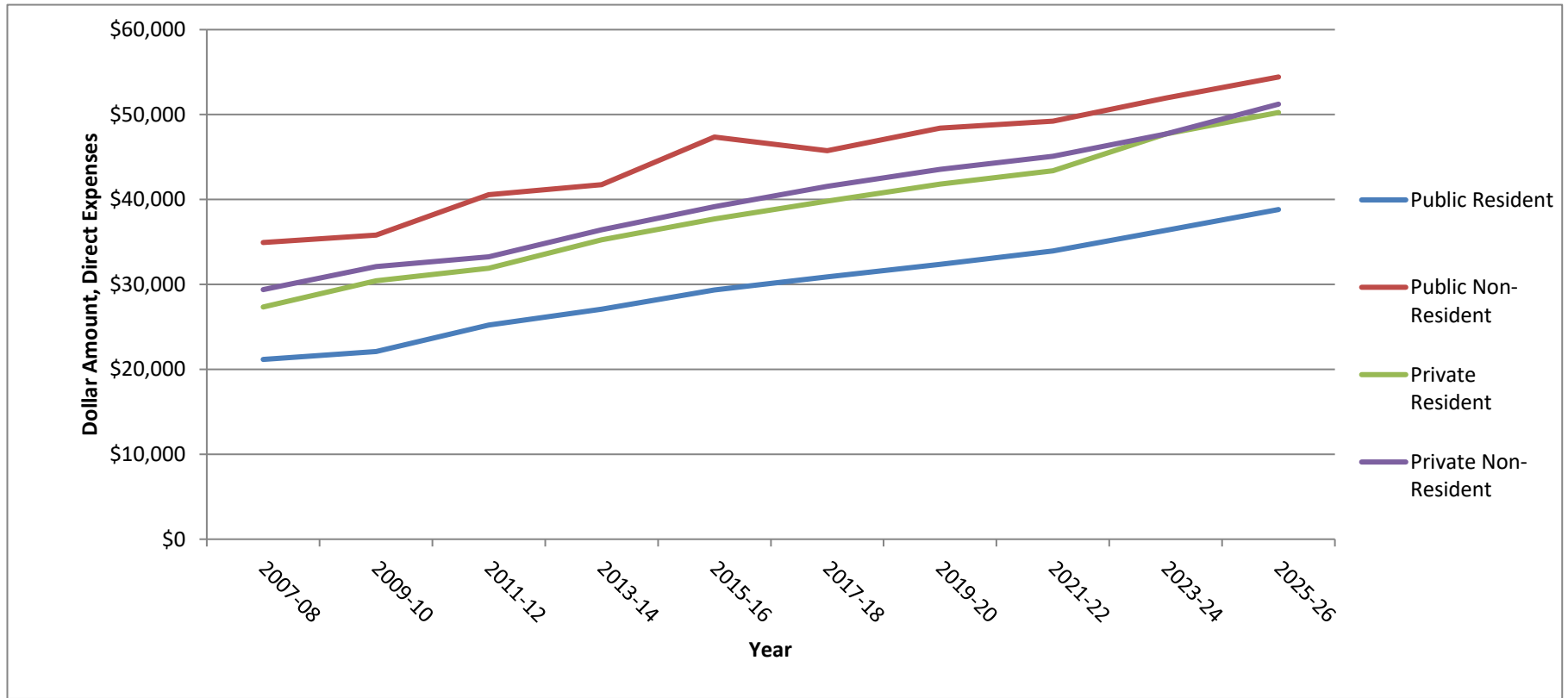


# Average Direct Expenses, Public and Private Institutions, 2007-2026

U.S. Schools and Colleges of Optometry  
(Tuition + Fee + Books + Instruments = Direct Expenses)



	2007-08	2009-10	2011-12	2013-14	2015-16	2017-18	2019-20	2021-22	2023-24	2025-26
Public	Resident (In-State Tuition)	\$21,168	\$22,115	\$25,204	\$27,070	\$29,332	\$30,874	\$32,362	\$33,936	\$38,817
	Non-Resident	\$34,935	\$35,796	\$40,575	\$41,759	\$47,365	\$45,746	\$48,405	\$49,238	\$54,424
Private	Resident (In-State Tuition)	\$27,343	\$30,436	\$31,891	\$35,255	\$37,701	\$39,826	\$41,822	\$43,394	\$50,244
	Non-Resident	\$29,389	\$32,089	\$33,259	\$36,420	\$39,161	\$41,547	\$43,538	\$45,092	\$51,225