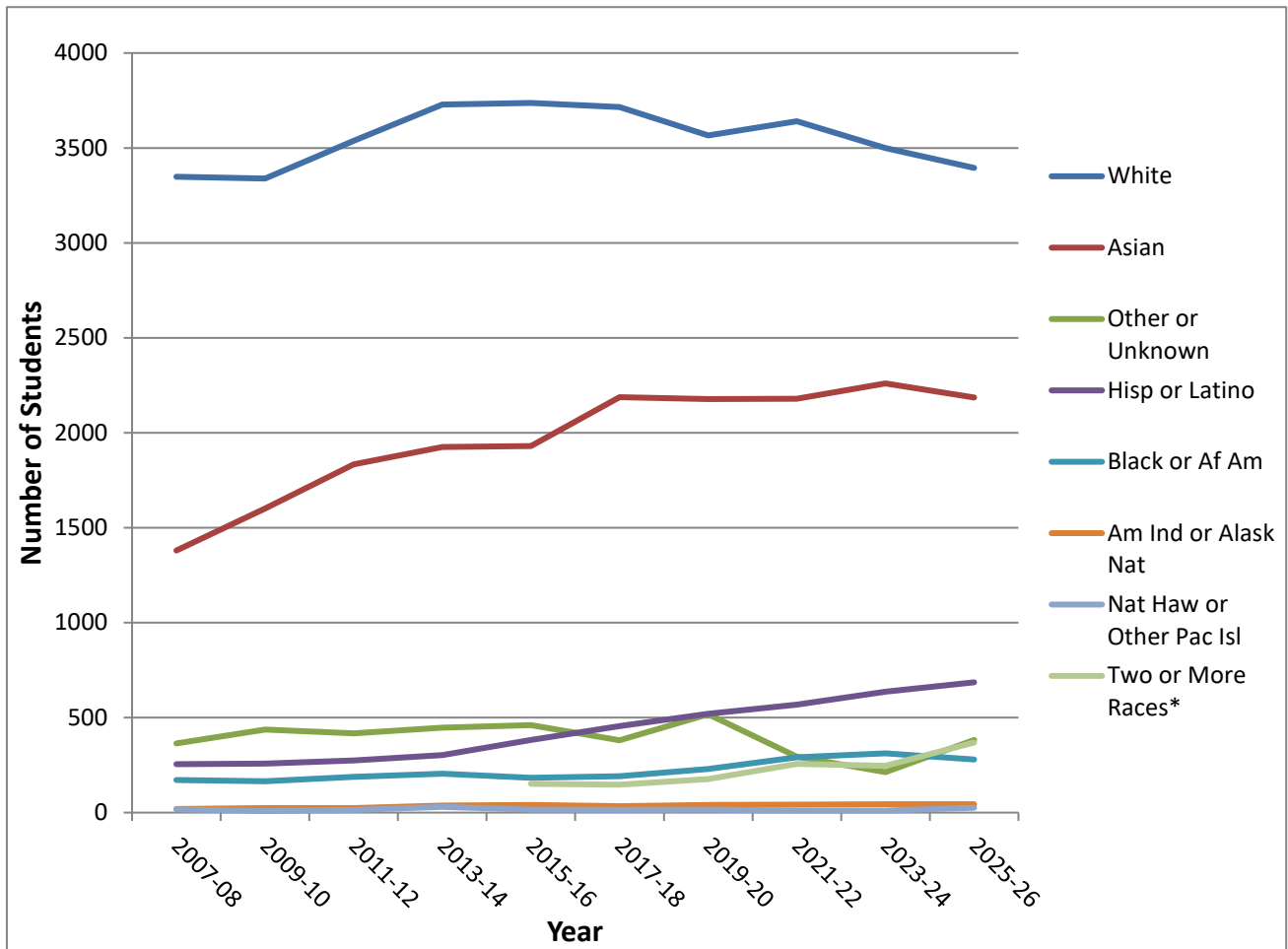


# Race/Ethnicity of Full-Time Doctor of Optometry Students, 2007-2026

## U.S. Schools and Colleges of Optometry

(Regular Programs)



	Am Ind or Alask Nat	Asian	Black or Af Am	Hisp or Latino	Nat Haw or Other Pac Isl	White	Two or More Races*	Other or Unknown	Total Enrollment
2007-08	19	1380	172	255	17	3349		364	5556
2009-10	24	1601	165	258	8	3339		437	5832
2011-12	24	1834	189	274	13	3538		417	6289
2013-14	37	1926	204	302	30	3729		448	6676
2015-16	40	1931	183	383	15	3737	151	460	6900
2017-18	34	2187	192	455	13	3716	147	380	7124
2019-20	41	2177	229	521	15	3566	177	518	7244
2021-22	42	2179	291	569	11	3641	257	294	7284
2023-24	44	2260	312	636	10	3499	246	213	7220
2025-26	44	2186	280	686	26	3395	369	382	7368

\*first collected in 2015-16

[www.optometriceducation.org](http://www.optometriceducation.org)

For more data on optometric education, go to <https://optometriceducation.org/data-reports/>

May 2026