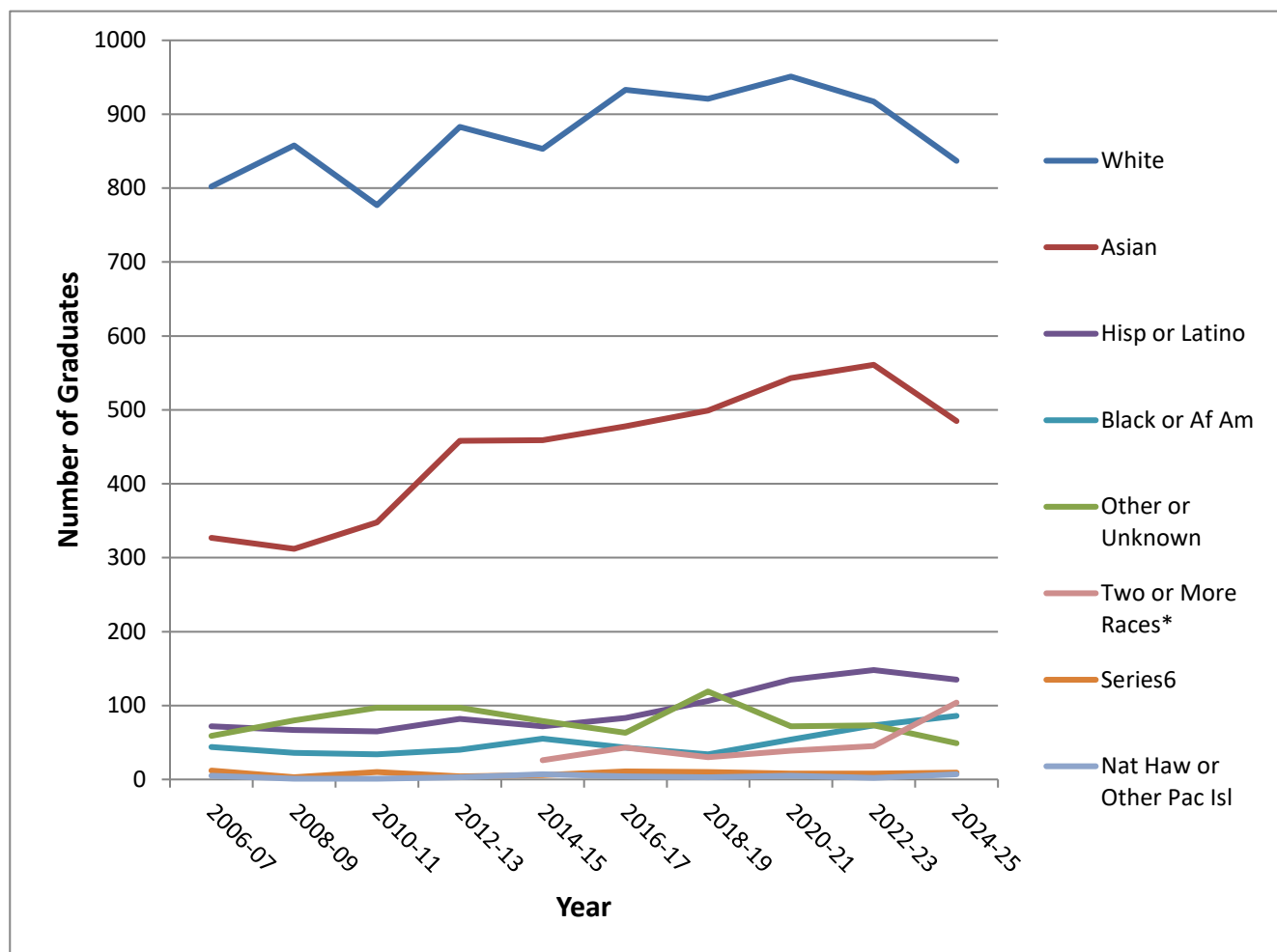


Race/Ethnicity of Graduates of Regular and Special OD Programs, 2006-2025

U.S. Schools and Colleges of Optometry



	Am Ind or Alask Nat	Asian	Black or Af Am	Hisp or Latino	Nat Haw or Other Pac Isl	White	Other or Unknown	Two or More Races*	Total Graduates
2006-07	12	327	44	72	5	802	59		1321
2008-09	3	312	36	67	1	858	80		1357
2010-11	10	348	34	65	1	777	97		1332
2012-13	4	458	40	82	3	883	97		1567
2014-15	6	459	55	72	7	853	79	26	1557
2016-17	11	478	43	83	4	933	63	43	1658
2018-19	10	499	34	106	3	921	119	30	1722
2020-21	8	543	54	135	5	951	72	39	1807
2022-23	8	561	73	148	2	917	73	45	1827
2024-25	9	485	86	135	7	837	49	104	1712

*first collected for 2014-15 graduates
www.optometriceducation.org
 Association of Schools and Colleges of Optometry